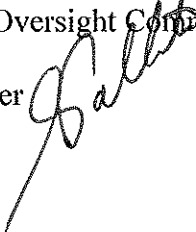




State of Vermont
Department of Corrections
103 South Main Street
Waterbury, VT 05671-1001
www.doc.state.vt.us

[phone] 802-241-2442
[fax] 802-951-5017
[fax] 802-951-5086

Agency of Human Services

TO: Members, Joint Corrections Oversight Committee
FROM: Andrew Pallito, Commissioner 
DATE: July 15, 2014
SUBJECT: Monthly Reports

The attached monthly (June) and quarterly reports are being forwarded to you.

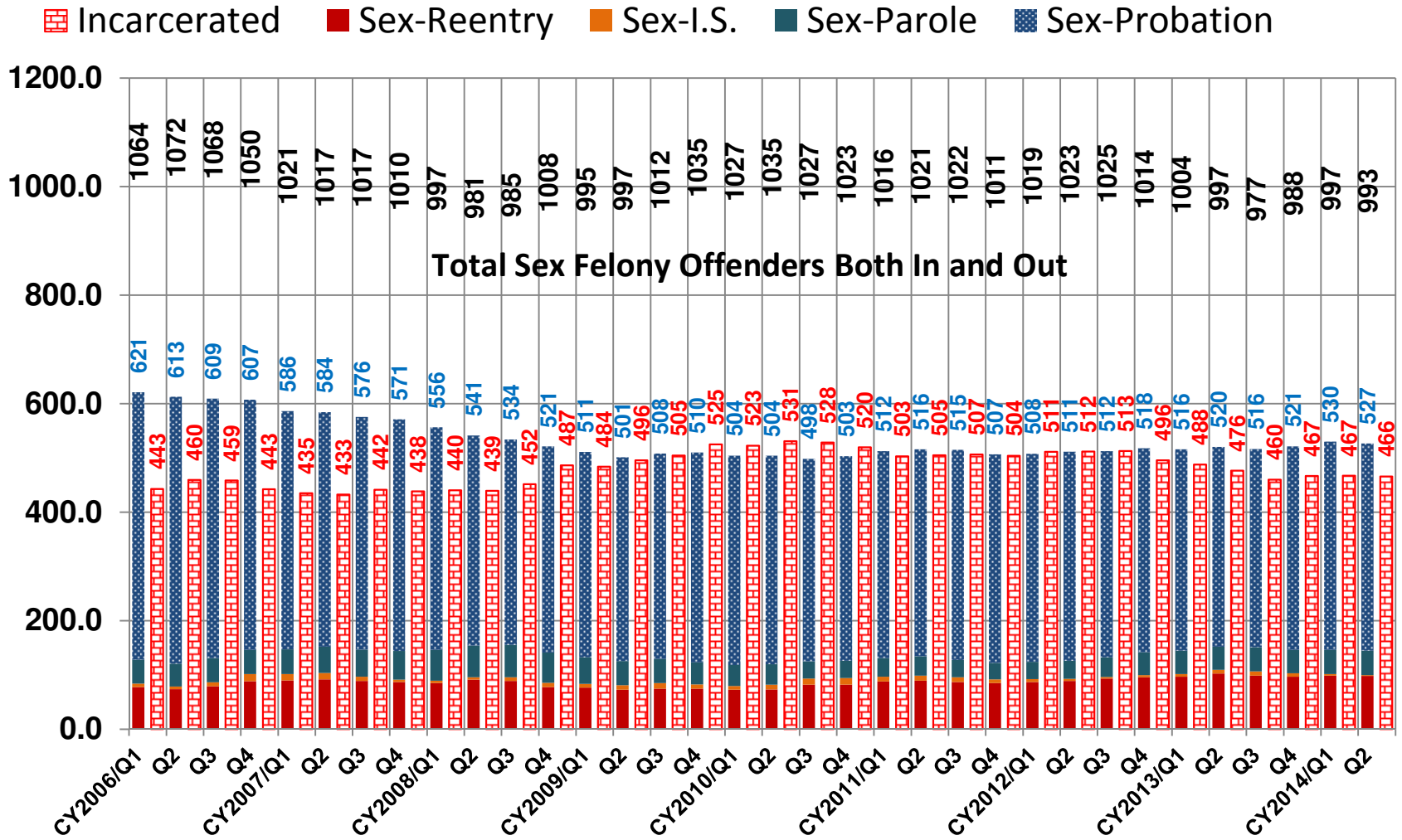
1. Detainees, Average Daily Populations
2. Sex Offenders: Jail & Community Supervision
3. Incarcerated: Property & Drug Felons
4. Inmates Past Min: Lack of Approved Housing
5. Monthly Average Custody Population less Parole & probation July 2012 to Date
6. Corrections quarterly dashboard

If you have any questions, please do not hesitate to contact me.

Attachment(s)

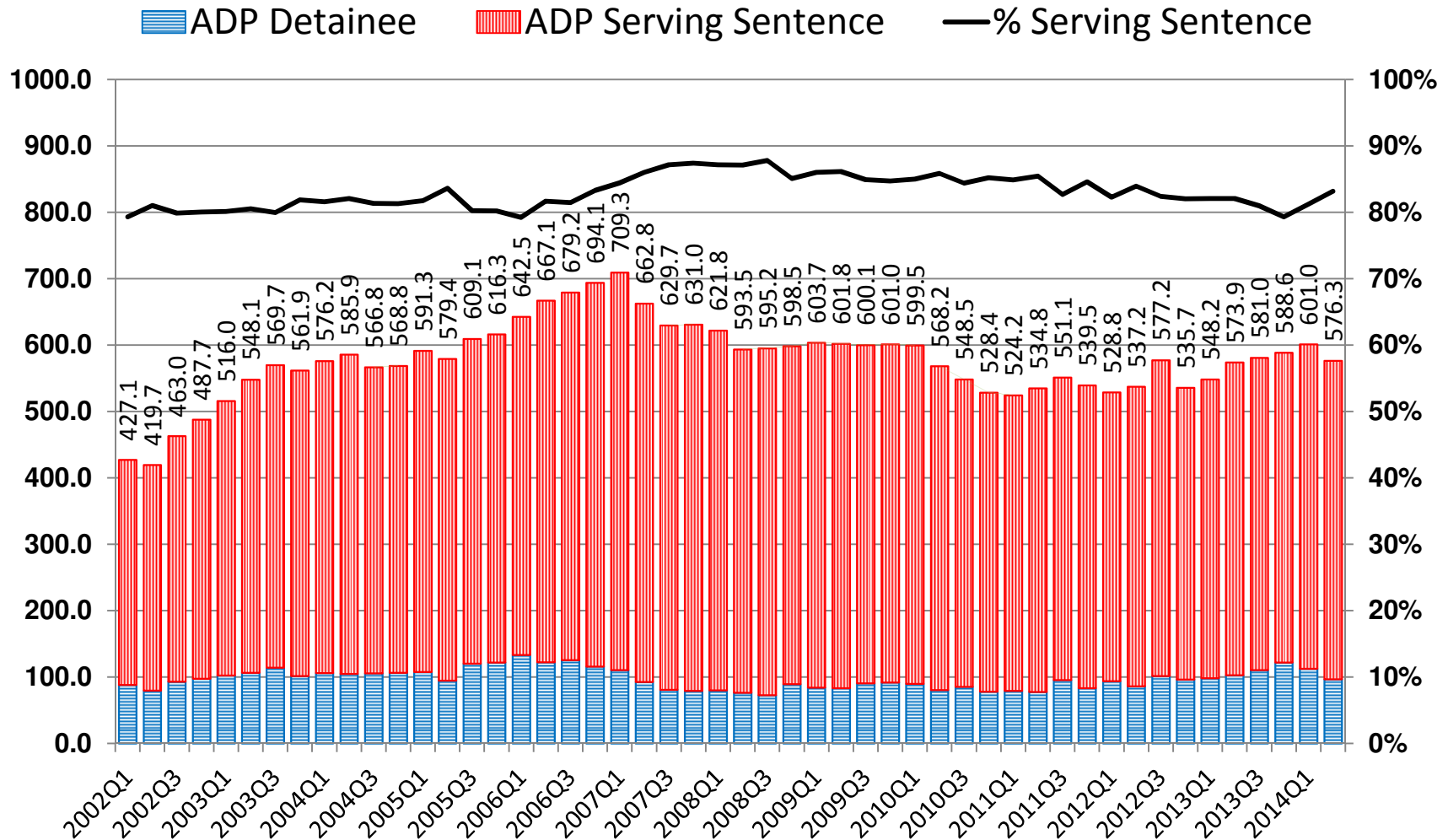
AP/jh

Sex Felony Offenders: Jail & Community Supervision By Legal Status



CY2014/Q2 as of June 2014.

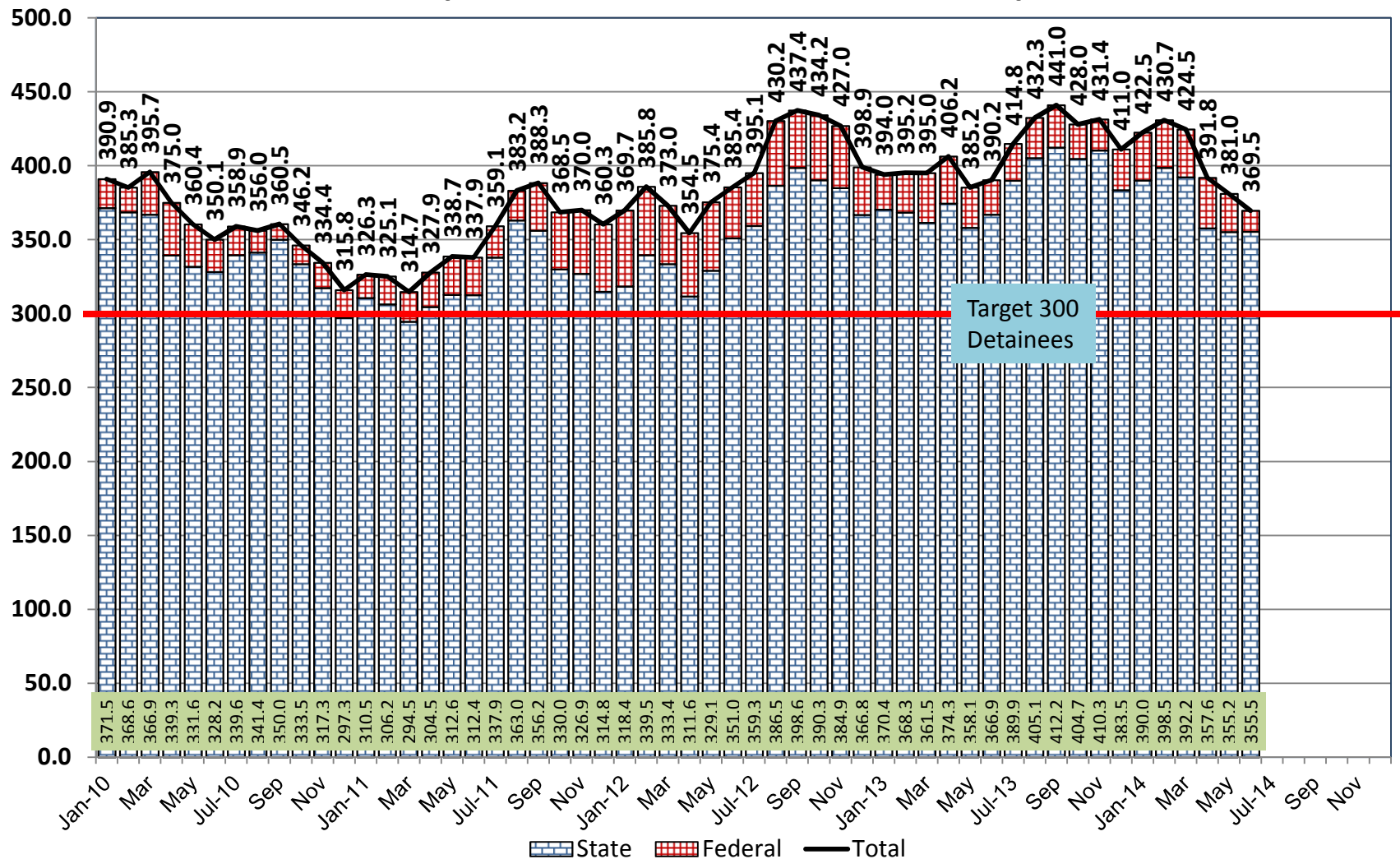
Incarcerated Property & Drug Felons As Most Serious Offense



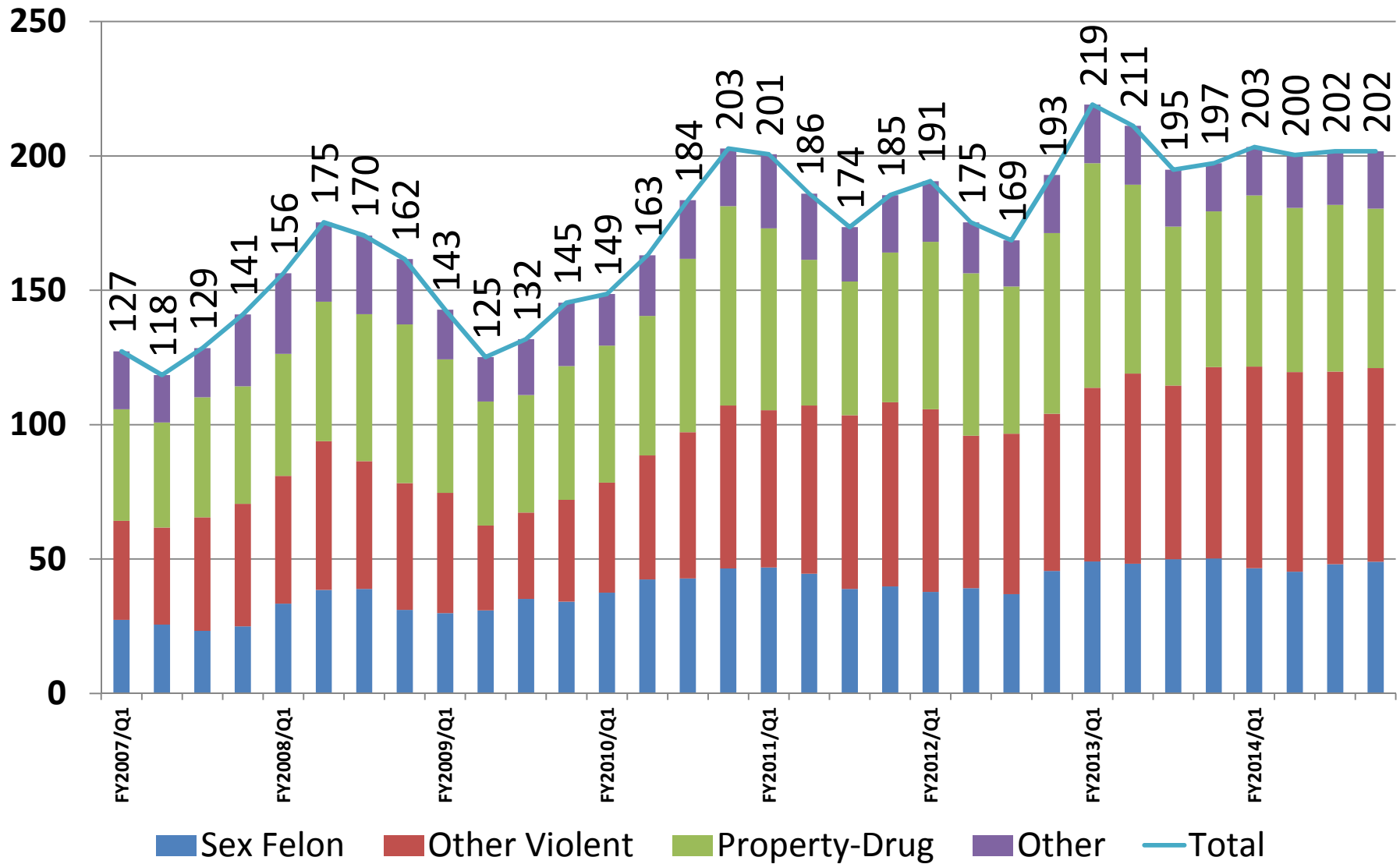
Persons with both property/drug felonies and more serious (violent) felonies are excluded from these counts. CY2014/Q2 (complete) as of June 2014.

Detainees, Average Daily Population

Monthly Counts Since January 2010



Inmates Past Minimum Release, Lacking Housing Breakdown by Type of Offense



FY2014/Q4 as of June 2014

Inmates Past Minimum, Lacking Housing

FYEAR/QTR	Sex Felon	Other Violent	Property-Drug	Other	Total
FY2007/Q1	27.4	36.9	41.5	21.5	127
FY2007/Q2	25.6	36.1	39.1	17.7	118
FY2007/Q3	23.3	42.2	44.6	18.4	129
FY2007/Q4	25.0	45.5	43.7	26.8	141
FY2008/Q1	33.5	47.5	45.4	30.0	156
FY2008/Q2	38.5	55.3	51.9	29.5	175
FY2008/Q3	38.9	47.5	54.7	29.3	170
FY2008/Q4	31.1	47.2	59.0	24.3	162
FY2009/Q1	29.9	44.8	49.7	18.5	143
FY2009/Q2	30.9	31.5	46.1	16.6	125
FY2009/Q3	35.2	32.1	43.7	20.8	132
FY2009/Q4	34.2	37.9	49.8	23.6	145
FY2010/Q1	37.5	41.0	50.9	19.3	149
FY2010/Q2	42.4	46.2	52.0	22.5	163
FY2010/Q3	42.8	54.4	64.5	21.8	184
FY2010/Q4	46.5	60.6	74.2	21.4	203
FY2011/Q1	46.8	58.6	67.6	27.6	201
FY2011/Q2	44.6	62.5	54.2	24.6	186
FY2011/Q3	38.9	64.7	49.8	20.2	174
FY2011/Q4	39.9	68.4	55.7	21.3	185
FY2012/Q1	37.7	68.0	62.3	22.6	191
FY2012/Q2	39.2	56.7	60.4	19.0	175
FY2012/Q3	37.0	59.7	54.8	17.2	169
FY2012/Q4	45.6	58.4	67.2	21.7	193
FY2013/Q1	49.1	64.7	83.5	21.8	219
FY2013/Q2	48.3	70.7	70.3	21.9	211
FY2013/Q3	50.0	64.6	59.2	21.1	195
FY2013/Q4	50.2	71.2	58.0	17.9	197
FY2014/Q1	46.6	75.0	63.7	18.0	203
FY2014/Q2	45.3	74.3	61.0	19.7	200
FY2014/Q3	48.1	71.7	62.0	19.9	202
FY2014/Q4	49.0	72.1	59.3	21.4	202

Monthly Average Custody Population less Parole & Probation - Latest Two Fiscal Years (to date)

Average Monthly Populations -- July 2012 - June 2013														
FY 2013 Month	PAF	SCS	Cond. Reentry	Home Confine	Subtot Comm	Incarc OOS	Incarc. In VT	Subtotal Incarc.	Totals	Home Detainee	Incarc. Detainee	Incarc. Sentd	Incarc. Male	Incarc. Female
Jul	1205	6	859	35	2104	482	1609	2091	4202	7	396	1695	1939	152
Aug	1209	7	845	33	2061	495	1616	2110	4171	7	431	1680	1951	159
Sep	1182	7	840	29	2029	511	1614	2125	4153	6	438	1687	1965	160
Oct	1180	7	852	30	2038	510	1596	2106	4144	6	434	1672	1953	152
Nov	1212	7	862	30	2080	504	1582	2086	4166	6	428	1658	1935	151
Dec	1212	7	856	33	2074	502	1546	2048	4122	5	400	1648	1917	131
Jan	1230	7	855	30	2091	508	1541	2049	4140	4	395	1653	1916	133
Feb	1285	6	855	29	2146	510	1544	2053	4200	4	396	1658	1921	132
Mar	1319	6	846	28	2171	503	1549	2052	4223	3	396	1656	1908	144
Apr	1338	6	820	30	2164	487	1602	2089	4253	5	406	1683	1938	151
May	1334	7	795	35	2136	487	1574	2061	4197	6	386	1675	1909	152
Jun	1289	7	782	33	2078	478	1594	2072	4150	7	392	1680	1913	159
ADP FY2013	1249.5	6.6	838.7	31.4	2094.8	498.0	1580.5	2078.5	4178.7	5.4	408.1	1670.4	1930.4	148.1

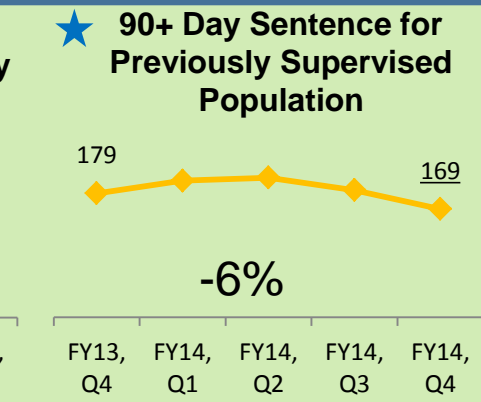
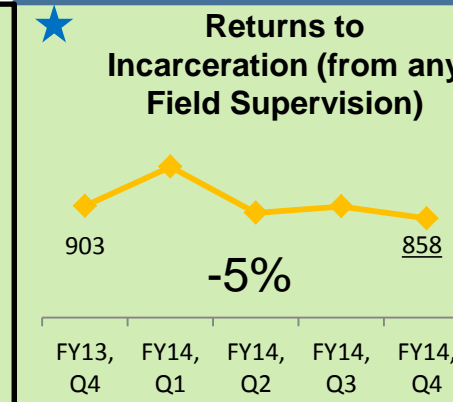
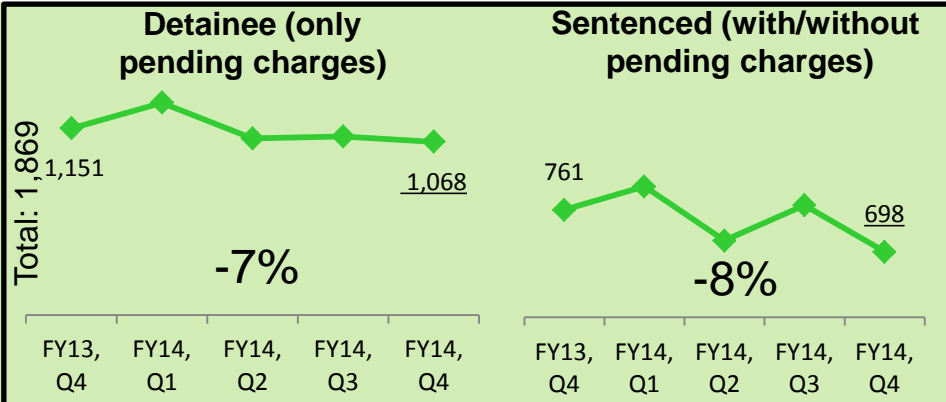
Average Monthly Populations -- July 2013 - June 2014														
FY 2014 Month	PAF	SCS	Cond. Reentry	Home Confine	Subtot Comm	Incarc OOS	Incarc. In VT	Subtotal Incarc.	Totals	Home Detainee	Incarc. Detainee	Incarc. Sentd	Incarc. Male	Incarc. Female
Jul	1247	7	773	23	2050	475	1623	2097	4153	6	417	1680	1932	166
Aug	1220	7	761	20	1988	472	1620	2092	4080	3	435	1657	1936	156
Sep	1208	7	738	21	1953	472	1658	2130	4084	2	443	1688	1967	163
Oct	1232	7	763	24	2002	495	1615	2110	4112	3	430	1680	1947	163
Nov	1211	7	765	24	1983	507	1606	2114	4096	3	434	1680	1948	166
Dec	1171	8	782	24	1960	501	1590	2091	4051	3	412	1679	1931	160
Jan	1103	9	770	24	1883	498	1623	2121	4004	3	423	1699	1965	156
Feb	1087	11	778	26	1877	501	1647	2148	4024	4	431	1717	1988	160
Mar	1050	16	787	26	1853	502	1646	2148	4001	4	425	1723	1985	163
Apr	1122	21	784	34	1927	495	1636	2130	4058	4	392	1738	1964	166
May	1128	26	777	36	1931	488	1608	2097	4028	3	382	1715	1932	165
Jun	1114	28	791	41	1933	491	1565	2056	3989	5	370	1687	1905	151
ADP FY2014	1157.8	12.9	772.4	26.8	1943.1	491.4	1619.9	2111.2	4057.9	3.6	416.1	1695.2	1950.0	161.2

Vermont Corrections Dashboard

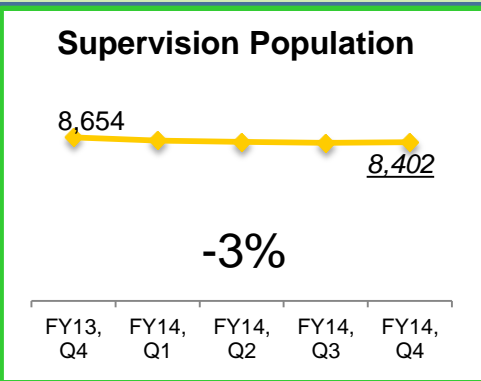
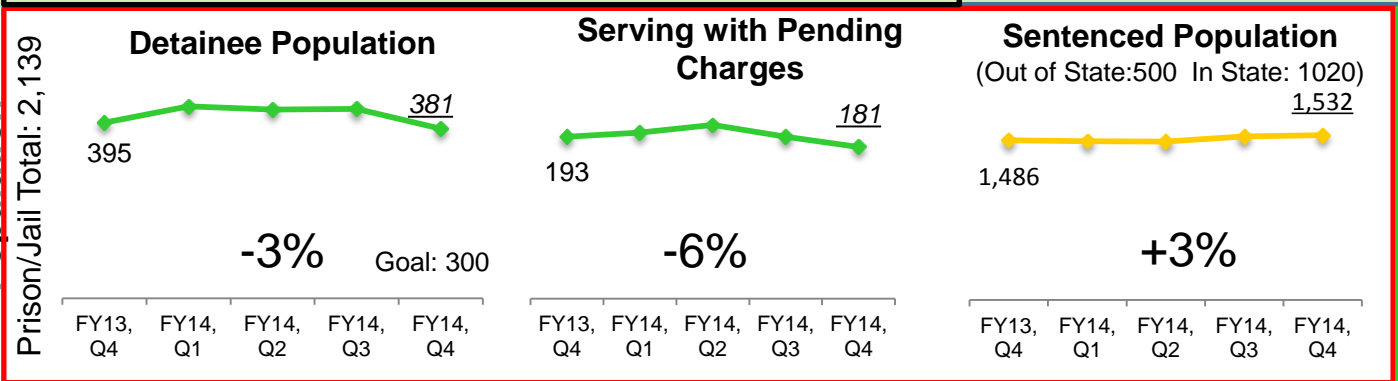
Fiscal Year 2014, Quarter 4

April 2014 – June 2014

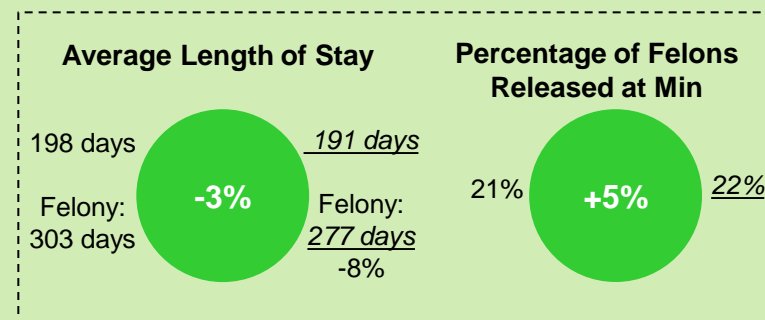
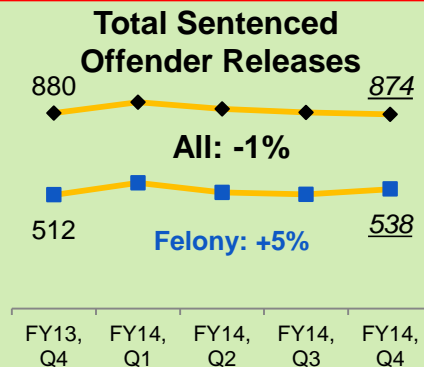
Admissions



Population



Releases



Key:

This quarter last year

+/-Annual Change

Most recent quarter

Beneficial trend

Neutral trend

Problematic trend

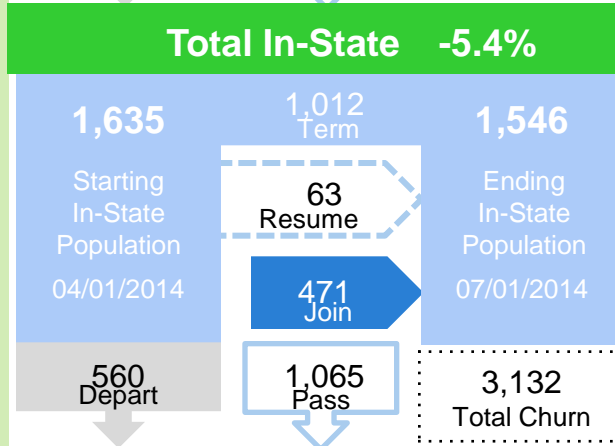
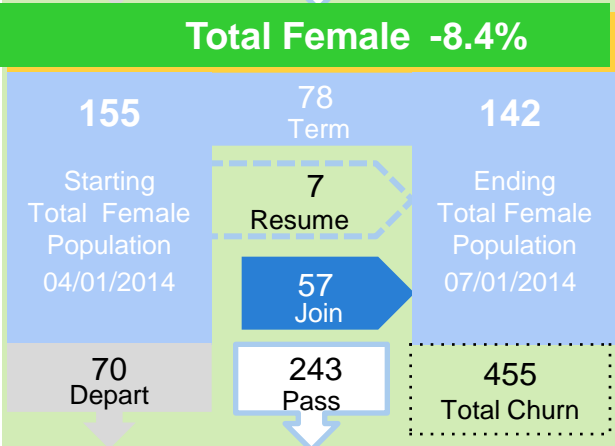
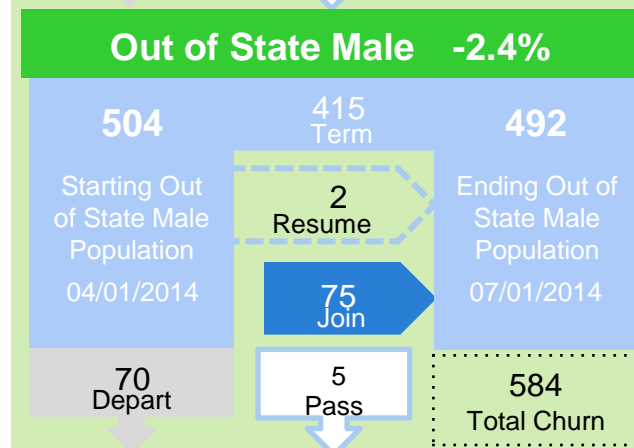
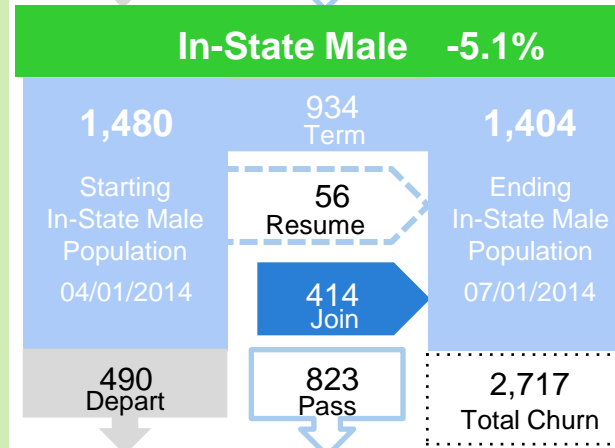
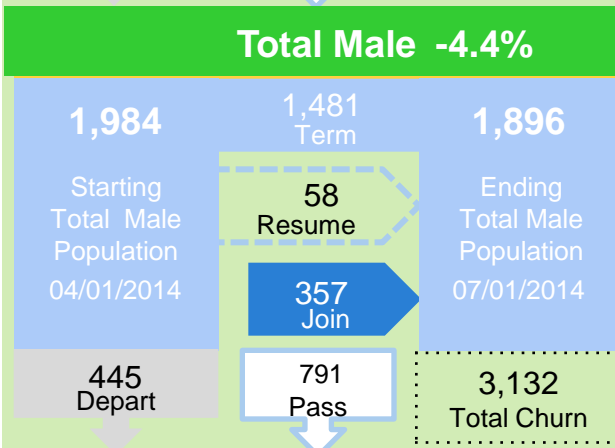
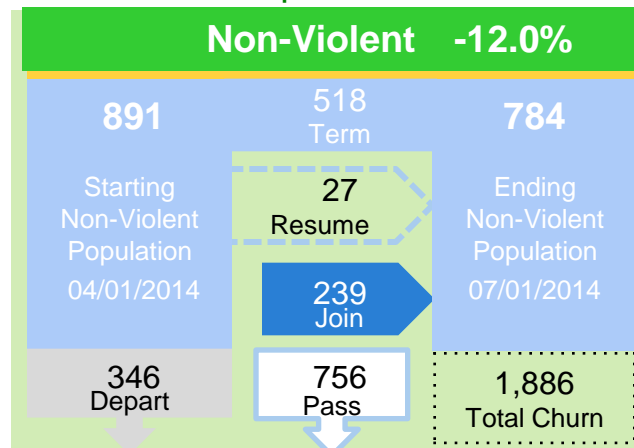
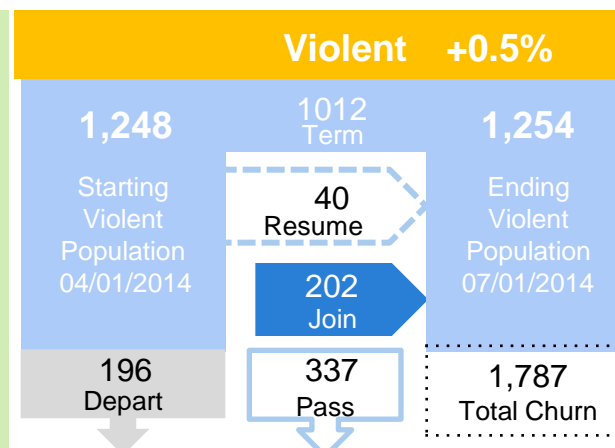
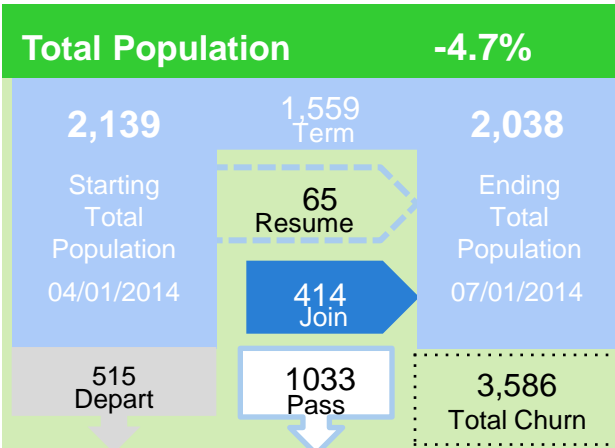


Measure related to recidivism

Vermont Corrections Dashboard

Fiscal Year 2014, **Quarter 4**

April 2014 – June 2014



Term: Incarcerated for full period;
Resume: Start period incarcerated, leave, & return;
Join: Ended but did not start period incarcerated;
Depart: Left during period;
Pass: Start and end during period; and,
Total Churn: Total people housed during period.